



SPARKLE

SPARKLE Intel® Arc™ Pro B60 24 GB / 48 GB

For Inference Workstation

SPARKLE Intel® Arc™ Pro B60 provides single GPU with 24 GB and Dual-GPU with 48 GB of memory, up to 456 GB/s bandwidth, and 160 XMX AI engines—ideal for demanding professional workloads. With Linux multi-GPU LLM support, it scales AI performance for faster, higher-quality results. Certified drivers ensure reliability across AI, design, engineering, and media tasks, while the Xe media engine supports fast, efficient AV1 high-res video processing—making it a powerful, flexible tool for modern creators.

Powerful Local Inferencing 24 GB / 48 GB Memory

Large Model Ready

- 24 GB / 48 GB of VRAM runs AI models with higher precision and accuracy
- Dedicated Intel XMX AI engines (Xe Matrix eXtensions)

With 24 GB / 48 GB of graphics memory, unlock the ability to run larger parameter AI models with higher precision, improving accuracy and versatility without compromising performance. Larger memory also allows content creators to tackle projects with greater detail and complexity.

Scalable AI Performance

Multi-GPU Ready Management Features

- Multiple GPU LLM Linux Support
- Scale up with 2/4/8/16 graphics in a server configuration with SPARKLE switch board.

Scale up with Linux multi-GPU compatibility, supporting OneAPI for faster AI processing with greater throughput and capacity for massive models.

Workstation Software

Pro & Consumer Drivers Management Features

- Pro drivers with ISV software certifications
- Windows & Linux OS support

Versatile performance across AI, design, architectural software and more with a robust, validated workstation pro driver. Switch gears and enable day-0 game drivers and gameplay enhancing software features such as XeSS by installing consumer drivers.

INDIVIDUAL FEATURES

SPARKLE Customization

- Provide Blower / Passive / Watercooling with single or Dual Intel® Arc™ Pro B60 GPU solutions.
- 20+ years of dGPU development experience, offering tailored solutions for OEM/ODM requirements.

24 GB / 48 GB Memory

- 24 GB / 48 GB of memory allows for larger parameter models enabling faster and more accurate results
- Take on bigger projects, 24GB / 48 GB of memory supports greater resolution, detail and complexity for creative projects and workstation applications

Xe2 Architecture

- Next-generation Xe2 architecture provides powerful performance across 20 Xe-cores for fast content creation and exploring cutting-edge AI applications.

XMV AI Engines

- XMV AI engines are at the backbone of each Xe-core, providing machine learning hardware resources to accelerate AI-enhanced gaming ,content creation, and media generation.

Flexible driver support

- Optimized per use case – whether for AI, pro workstation, or even gaming
- Install pro driver certified for workstation ISV applications
- Linux driver support for scalability
- Install consumer driver for gaming features such as XeSS 2 upscaling, frame generation, and low latency technologies

mGPU LLM Linux Support

- With mGPU LLM Linux support, scale up and run larger more advanced AI models for higher quality and faster outputs vs single GPU

Ray Tracing Units

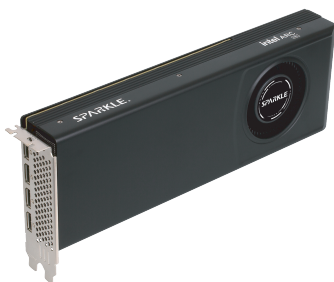
- For creative professionals, produce photo-realistic renders in cinematic 3D engines with the power of the Intel® oneAPI Rendering Toolkit, taking advantage of the ray tracing units to reduce rendering times of the most demanding workloads.

Xe Media Engine

- Comprehensive content creation toolkit with robust codec support, allowing for seamless video editing and exporting across various formats
- Twin MFX (multi-format codecs) distributes workloads in parallel so video exports can be done faster, saving time

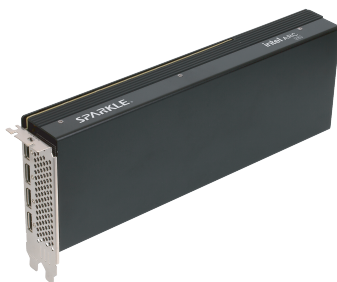
SPECIFICATION

	Singel-GPU	Dual-GPU
GPU Clock	2400 MHz	TBD
Xe-Core	20	20 x 2
Ray Tracing Units	20	20 x 2
Intel® XMV Engines	160	160 x 2
GPU Peak Tops (Int8)	197	197 x 2
Memory Size	24GB GDDR6	48GB GDDR6
Graphics Memory Interface	192-bit	192-bit per GPU
Graphics Memory Bandwidth	456 GB/s	456 GB/s x 2
PCI Express Configurations	PCI Express 5.0 x 8	PCI Express 5.0 x 16
TBP	200W	300W
Power	1 x PCIe 8-pin	1 x 12V-2x6
Video Output	4 x DisplayPort 2.1	TBD



SPARKLE Intel® Arc™ Pro B60 24GB Blower

- 289 x 120 x 42mm
- 1056g
- 2-slot



SPARKLE Intel® Arc™ Pro B60 24GB Passive

- 289 x 120 x 42mm
- 1048g
- 2-slot



SPARKLE Intel® Arc™ Pro B60 48GB Dual-GPU

- TBD
- TBD
- 2-slot

Customized water-cooling solutions is also available.

Contact SPARKLE Now!

To learn more, please visit: <https://www.sparkle.com.tw/>

Or contact: sales@sparkle.com.tw

SPARKLE®